

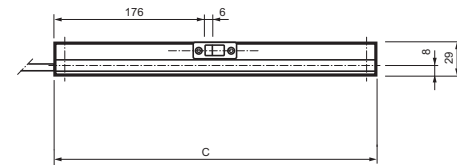
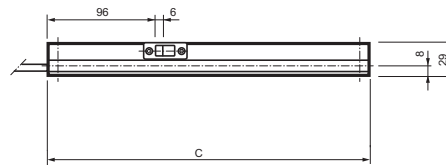
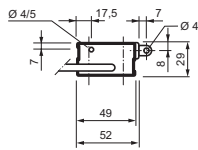
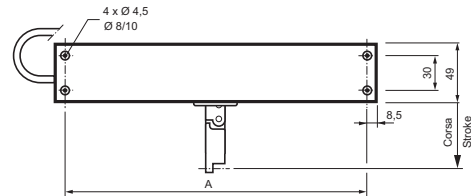
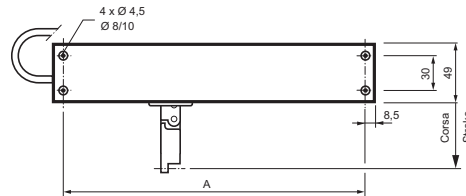
DESCRIZIONE DI CAPITOLATO

Attuatore elettrico lineare MINGARDI con movimento a catena articolata contenuta all'interno dell'involucro. Funzionamento con tensione di alimentazione 230V~ 50 Hz Conforme alle Direttive 2006/95 LVD - 2004/108 EMC. Funzionamento con tensione di alimentazione 24V CC Conforme alla Direttiva 2004/108 EMC. Dotato di sistema di fine corsa elettronico in apertura e ad assorbimento in chiusura. Collegabile in parallelo. Colori disponibili: anodizzato argento (A) - anodizzato nero (N) - RAL 9003 (B).

DESCRIPTION OF SPECIFICATIONS

MINGARDI linear electric actuator with reinforced double-sprocket chain inside the actuator body. Operating voltage: 230V~ 50 Hz in conformity with Directives 2006/95 LVD - 2004/108 EMC. Operating voltage: 24V DC in conformity with Directive 2004/108 EMC. Predisposed with electronic limit switch system for opening and closing absorption. Can be connected in parallel. Colours available: anodised silver (A) - anodised black (N) - RAL 9003 (B).

Micro S Disegno dimensionale / Scale drawing



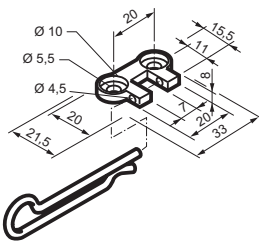
VERSIONE 24V CC
24V DC VERSION

| Corsa/Stroke | A | C |
|--------------|-----|-------|
| 200 | 224 | 261,4 |
| 250 | 269 | 286,4 |

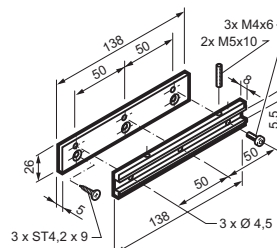
VERSIONE 230V AC
230V AC VERSION

| Corsa/Stroke | A | C |
|--------------|-----|-----|
| 200 | 324 | 341 |
| 250 | 349 | 366 |

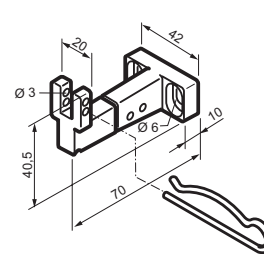
Accessori - Ricambi / Accessories - Spare parts



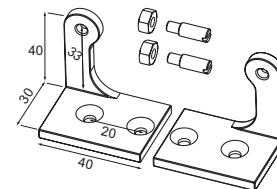
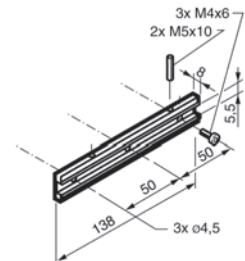
2700093



2700094



2700096



2700080

ACCESSORI DI FISSAGGIO / FIXING ACCESSORIES

| CODICE CODE | DESCRIZIONE DESCRIPTION |
|----------------|--|
| 2700093 | Kit universale per applicazioni su finestre a sporgere <i>Universal kit for fitting top-hinged windows</i> |
| 2700094 | Kit universale per applicazioni su finestre a vasistas <i>Universal kit for fitting bottom-hinged windows</i> |
| 2700096 | Kit universale per applicazioni su finestre a mansarda <i>Universal kit for fitting roof windows</i> |
| 2700080 | Staffa basculante per applicazioni su bancale <i>Pivoting bracket for horizontal plane applications</i> |

RICAMBI / SPARE PARTS

| CODICE CODE | DESCRIZIONE DESCRIPTION |
|----------------|----------------------------|
| | |

ACCESSORI DI COMANDO: per informazioni si prega di contattare il nostro servizio tecnico-commerciale
CONTROL ACCESSORIES: please contact our technical support service for further information